

SHORT AND LONG WAVE RADIATION: TFLEX FLEX

GILL SONIC ANEMOMETER, FLEX
GILL SONIC ANEMOMETER, TFLEX

CO2 ANTENNA
AT/RH, TFLEX MP-101A
AT/RH, FLEX MP101A
RADAR REFLECTOR

RAIN GAGE(2), FLEX & TFLEX
SOLAR LIGHT, FL(5) Y 20s

AT/RH2. FLEX HYGROCLIP

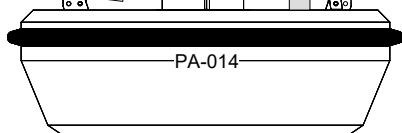
PAROS BAROMETER, FLEX
GE8100 BAROMETER, TFLEX

DEPLOYMENT/RECOVERY HANDLE

PMEL pCO2 ELECTRONICS-PMEL SPAN GAS-LUXFER.

FLEX SYSTEM SOFT VER# 1.12

TFLEX TUBE
TFLEX SYSTEM SOFT VER# 1.12



1 METER:
SBE-16 CTD/02/FLNTUS
SBE-43
SAMI pH SENSOR

1 METER:
SBE 37SMP TC FLEX
SBE 37SMP TC TFLEX

TOP SPLICED NYLON LENGTH = 1280 METERS S/N PAPA A12

2 METER:
NORTEK SIGNATURE 500 ADCP

CABLE BRACKET

1 1/4" SAS
1 1/4" SAS
2 LINKS 1" CHAIN
1" SAS
WRENCH TIGHTEN 3 SHACKLES

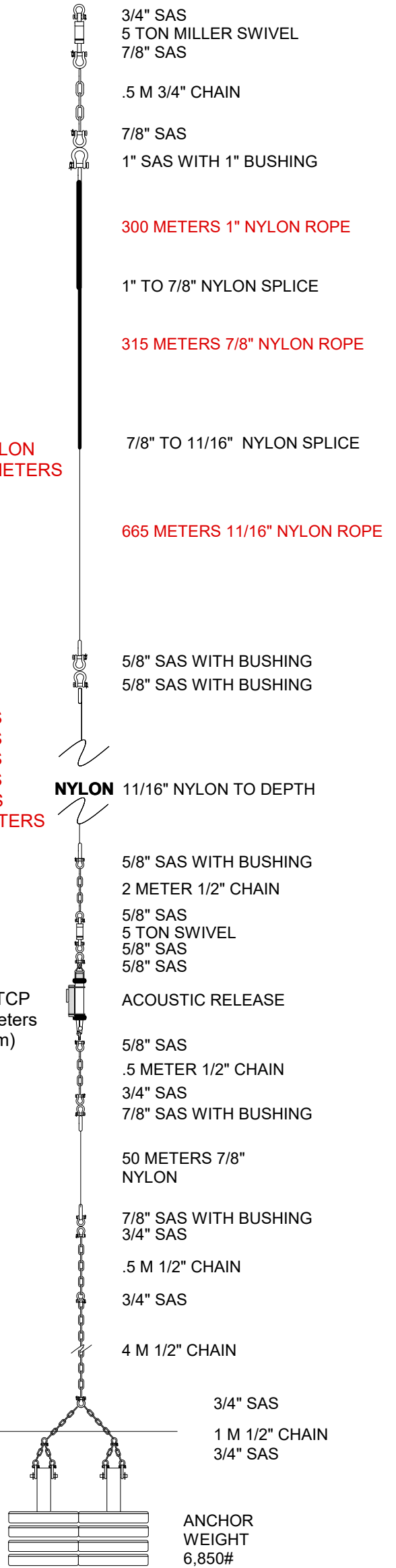
INDUCTIVE CABLE BREAKOUT

- 5 METERS SBE-37IM TC
- 10 METERS SBE-37IM TC
- 14 METERS SBE-37IM TC
- 15.46 METERS AQUADOPP
- 20 METERS SBE-37IM TC
- 25 METERS SBE-37IM TC
- 30 METERS SBE-37IM TC
- 35.46 METERS AQUADOPP
- 37 METERS SBE-37IM TC
- 45 METERS SBE-37IM TC
- 55 METERS AQUADOPP PROFILER
- 60 METERS SBE-37IM TC
- 80 METERS SBE-37IM TC
- 100 METERS SBE-37IM TC
- 120 METERS SBE-37IM TC
- 150 METERS SBE-37IM TC
- 175 METERS SBE-37IM TCP
- 200 METERS SBE-37IM TC
- 300 METERS SBE-37IM TCP
- 315 METERS PAL
- 325 METERS END OF WIRE 3/4" SAS

Z144 645 METERS
Z287 554 METERS
Z250 500 METERS
Z357 458 METERS
CUT 261 METERS
TOTAL = 2418 METERS

SBE-37SM TCP (depth-56 meters above bottom)

ALL SHACKLES BELOW THIS LINE WELDED



2020 MOORING INFO
NYLON TOTAL 3698 METERS
WIRE 325 METERS
HARDWARE 59M
MOORING LENGTH: 4082 METERS
TARGET DEPTH 4320 METERS
PROJECTED SCOPE .965

WRENCH TIGHTEN ALL SHACKLES

DEPTH:
4,215 METERS, ODD YEARS
4,230 METERS, EVEN YEARS

NOAA-PMEL
7600 Sandpoint Way NE
Seattle, Wa. 98115
(206) 526-6149

MOORING: PA-014

LOCATION: 50N 145W

SCOPE: .965 : 1

DRAWN BY: MIKE CRAIG DATE: 11 JULY 2020

AS DEPLOYED: DATE:

NOTE SCOPE